



RDM+

Remote Desktop for Mobiles

For Palm OS devices

Getting Started Guide

RDM+ (Remote Desktop for Mobiles) is a communication tool that gives you the unique ability to connect to your desktop computer through the mobile device and interact with it remotely. With Remote Desktop for Mobiles you can not only observe the remote desktop on the screen of your mobile device but perform different usual keyboard and mouse commands.

RDM+ software consists of two components: the desktop part and the client module.

1. The desktop part (RDM+ Desktop) should be installed on the remote computer.
2. The client module (RDM+ Client) should be installed on your mobile device.

To work with your computer through the mobile device, you should install both these components.

1. Installing RDM+ Client on a mobile device

To install RDM+ on your handheld with Palm OS you should do the following:

1. Download RDM+ Client (.prc file) from www.rdmplus.com to your computer.
2. Connect your mobile device to the computer and install RDM+ using Palm Desktop or the other application for transferring files to Palm.

If the client is completely installed on your handheld and works properly, you will see the title screen at startup.



Your handheld also have to be connected to the Internet. Please, check the Internet settings of your device.

2. Registration and trial

There is no difference between trial and commercial version in work and design. The difference is in term of use: **You may use the trial version for full 7 days.**

After the first launch of RDM+ you will be asked to insert the license code, which you have received with the purchase of the program.



RDM+ Registration

Please enter your license code.
If you don't have a code yet,
select "Try" or you may purchase
it from site www.rdmplus.com.

License code:
.....

If you want to use **RDM+** in trial mode, click **Try** button.

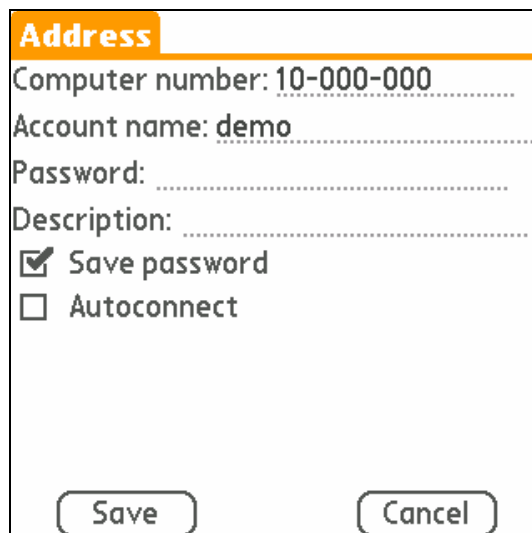
If you want to register RDM+ insert the license code in the corresponding field and click **Register** button. If you have inserted the right license code, the program will register and there will be no need to insert the license code once more.

3. Address book

At RDM+ launch address book window opens. The address book contains the list of computers which you used to connect to.

At first start the address book contains a demo computer only. You can connect to it and make sure that the client can work on your mobile device and will see a simple demonstration of the client abilities.

To add your computer to the address book select **New address** menu item.



Address

Computer number: 10-000-000

Account name: demo

Password:

Description:

Save password

Autoconnect

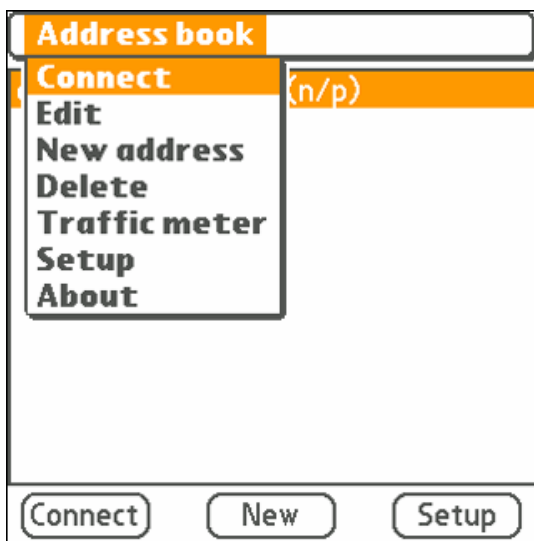
In the new address dialog you should enter the computer number which you received at registration of RDM+ Desktop. You may enter the computer number with or without dashes. Then you need to fill in your account (account name and password) which you created in RDM+ Desktop.

In Description field you may specify a short description text for computer with this number, which will help you to find a certain computer in large list of records. If the description field remains unfilled only the computer number and account name will be displayed.

Please, save your record clicking **Save** button.

4. Remote desktop control

You can freely connect to any saved computer by pressing **Connect** button or selecting **Connect** menu item. In case of successful connection to the selected remote computer you will see the remote desktop.



You can control the remote desktop by using both onscreen menu and desktop mode hotkeys. Following options are available in main menu:



- **Mouse** - This menu item is used to perform left, right, and double clicks of Mouse.



Note: To move mouse cursor you should use Right, Left, Up and Down navigation keys or joystick on your device.

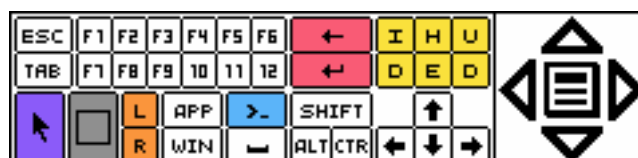
- **Zoom in**– Given menu item serves to enlarge the view of current desktop. **Zoom in** item is available if desktop size is larger then the device’s screen. You can zoom in twice and also restore the initial view of the desktop by choosing **Full desktop** item in the menu.



- **Scroll mode** - In **Zoom in** mode you can scroll your desktop without mouse cursor clicking the bottom left button on the keyboard  and using stylus.
- **Virtual keyboard** – You can use it to manage the remote screen faster and more convenient. To open the keyboard window click the center of the icon in the screen bottom right. 



Use stylus to operate with text, zoom in and out the screen and etc. This functionality also available through the **Hot keys** menu.



Buttons' meanings are as follows:

Violet button stands for entering the **scroll mode**

Gray button – zoom in and out

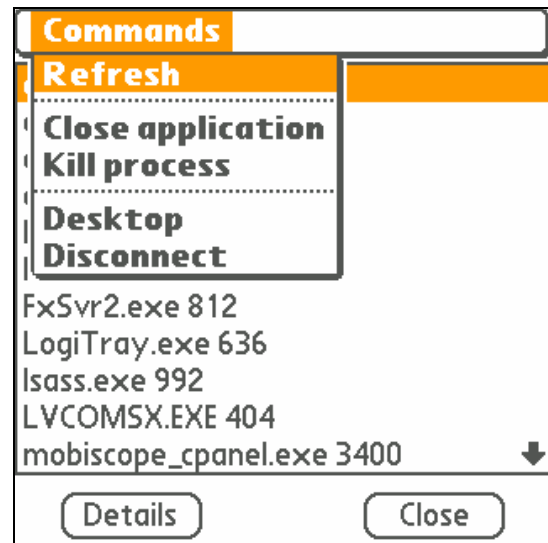
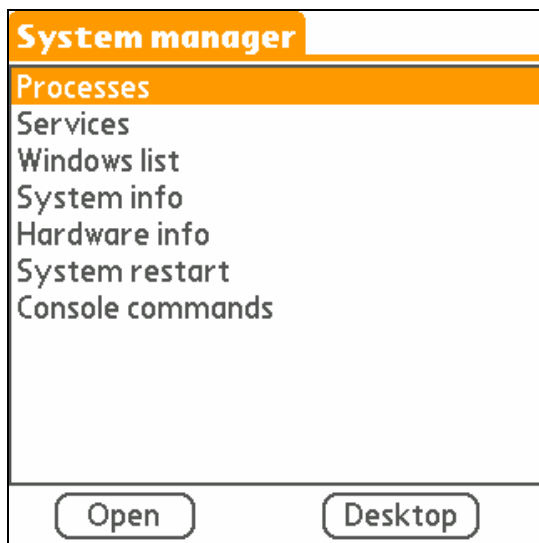
Orange group – Left and Right mouse buttons

Blue button is for quick start of **Console commands**

Yellow group – Insert, Home, Page Up, Delete, End, Page Down respectively

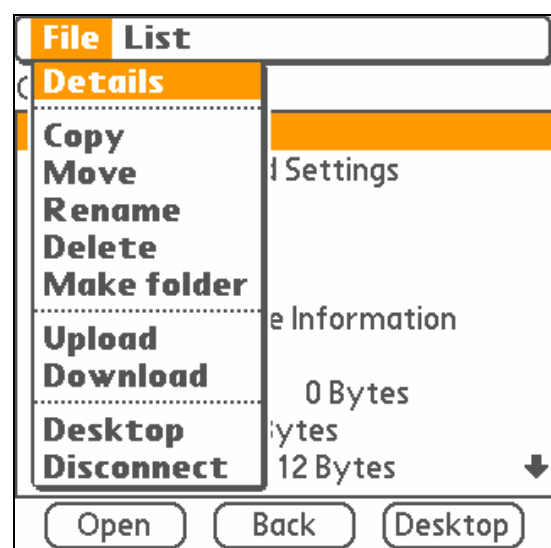
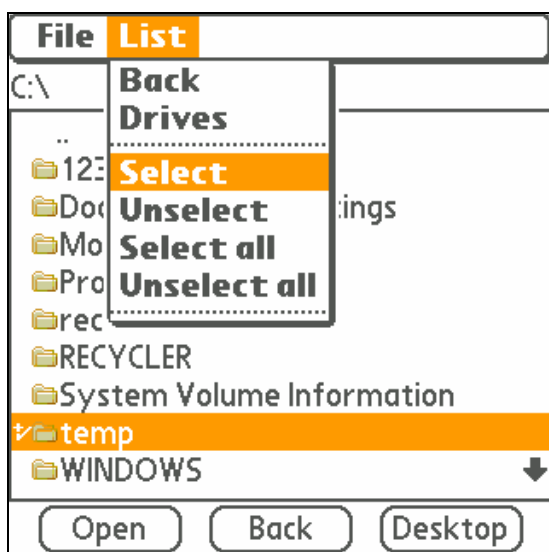
Pink group – Backspace and Enter respectively

- **System manager** - This menu item allows you to manage the remote computer's system parameters (like Windows, Drives, Processes, Services). You may also execute commands on the remote computer if you select the submenu item **Console Commands**.



- **File manager** – This feature is for convenient management of files on remote computer without accessing desktop. For file operations you can use either a single file or a folder or a selected group of files and folders.

You can also exchange your files uploading them from your mobile to the PC and vice-versa (downloading) using **File Manager**.



You can perform the following actions with files and folders on remote computer using File manager menu items named below:

- **Copy** – Copying of the selected file or folder (or marked group of files and folders) to specified destination folder;
- **Move** – Cutting and moving of the selected file or folder (or marked group of files and folders) to specified destination folder;
- **Rename** – Renaming of the current file or folder;
- **Delete** – Deleting of the selected file or folder (or marked group of files and folders);
- **Make folder** – Making a new folder;
- **Upload** – Uploading files to the remote computer from your mobile;
- **Download** – Downloading files from the remote computer to your mobile;
- **Desktop** – Allows you to get back to the remote desktop quickly.

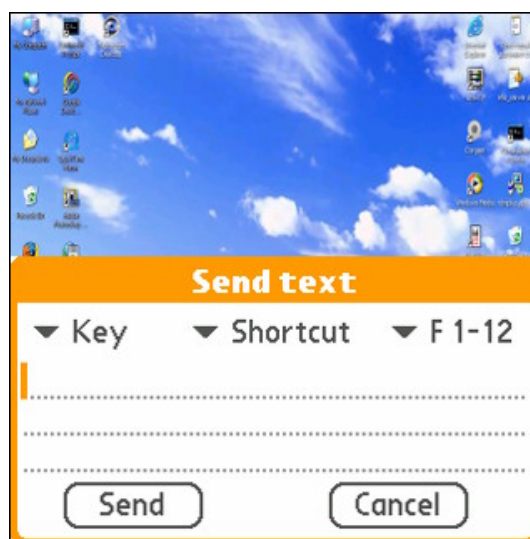
For copying, moving and deleting operations you can use either a single file or a folder or marked group of files and folders.

- **Drives** – Opening the list of the remote computer's drives;
- **Select/Unselect** – Selecting/unselecting the selected file or folder for a common group;
- **Select/ Unselect all** – Selecting/unselecting all files and subfolders in selected folder for a common group;

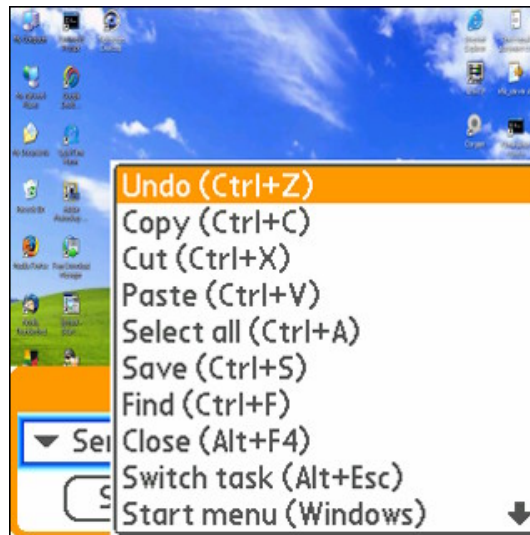
For operation with a single file or a folder, move selection bar to it and select an appropriate item from menu. For operations with a group of files or folders first select the required files and/or folders, select a corresponding menu item and specify a destination folder in appeared dialog.

- **Send text** – You can enter the text that will be transferred to remote host just like you enter it from a keyboard. Along with the plain text, you can also insert control keys and shortcuts (E.g. Alt+ F4).

Note: In order to transfer # symbol, you should enter it twice (##) as # key can be involved in other control key combinations as the first symbol (E.g. my password #Enter)



- **Send shortcut** –You can select a shortcut to send it to remote host, like entering it from keyboard.



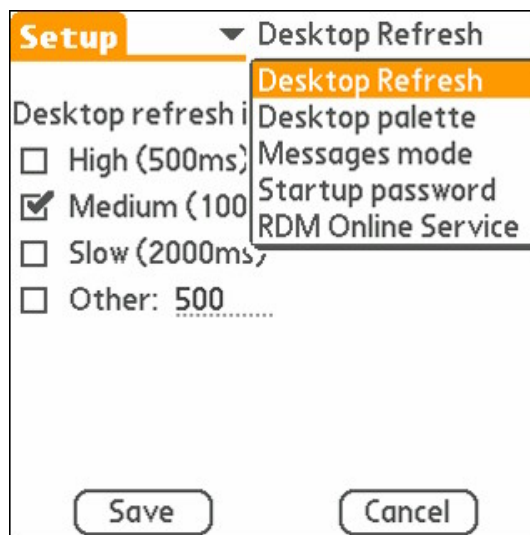
- **Disconnect** – You will be disconnected from remote computer, choosing this menu item.

5. Setup

You can change settings of application in **Setup** menu. There are following subsections in Setup menu:

- **Desktop refresh**

You can change the remote desktop refresh rate. Refresh rate is specified in milliseconds, the possible value is from 200 to 30000. Increasing this value you can reduce data traffic, but the time interval between changes of remote desktop will be increasing. By default desktop refresh is 1000 ms.



- **Desktop palette**

This item defines color palette used at transferring a picture of remote desktop. By default 8 bits palette (256 colors) is used. Decreasing the palette value you can reduce the data traffic and make faster refresh of the desktop, but a picture of screen will be degraded. For best quality pictures with fast 3G connection, you can try to use a 24 bits palette (true color).

- **Connection type**

The application supports both **HTTP** and **TCP/IP** connection types. If it is problematic to connect via TCP/IP connection type, please select HTTP connection type in this section

Note: After changing any parameter in Setup menu, don't forget to save your new settings by choosing a **Save** item in menu. Otherwise your changes won't be saved.

6. Support

You can find more information about RDM+ on our site: www.rdmplus.com

Looking for update or trial installation? See the Download page:

www.rdmplus.com/rdm/palm/download.html

Support form for further assistance: www.rdmplus.com/rdm/palm/support.html

Alternatively, you can send us an email at rdmsupport@shapeservices.com

Appendix A – Downloading RDM+ Client

RDM+ Web client

Point any browser to web.rdmplus.com Sign up for RDM+ Web service and connect to your computer remotely.

RDM+ Web service is also available from Apple iPhone and iPod Touch at iphone.rdmplus.com Sing in with your RDM+ Web account.

RDM+ Client for Apple iPhone and iPod Touch

1. Go to App Store on your iPhone or iPod Touch and download RDM+.
2. Or [find RDM+ on iTunes Store](#) and download it to your computer. Then connect your iPhone or iPod Touch to the computer and iTunes will sync applications automatically.

RDM+ Client for BlackBerry handheld

1. Point your BlackBerry browser to bb.rdmplus.com. Scroll down to highlight **Download** and select **Get Link** from the menu. Download the client and reboot your device.
2. If for some reason you can't download the client module directly, download RDM+ Client (.zip file) from www.rdmplus.com to your computer. Unzip the file.

Connect your BlackBerry to the computer. Run BlackBerry Desktop Manager on your computer, choose Application Loader, browse into a folder with rdmplus.alx file, select it and start the file uploading. The icon of RDM+ application appears on your device.

RDM+ Client for Java-enabled phone and Symbian OS device

1. You can download the client directly to your mobile device. The WAP download location is: wap.rdmplus.com
2. If for some reason you can't download the client module directly, or error occurs at download, you can download RDM+ Client (.zip file) from our site www.rdmplus.com

RDM+ Client for Windows Mobile device

1. Download the client from wm.rdmplus.com directly to your mobile device and install it.
2. If for some reason you can't download the client module directly, download RDM+ Client (.exe file) from www.rdmplus.com to your computer. Connect your mobile device to the computer and start the program installation. (You need Microsoft ActiveSync to be installed on your computer.)

RDM+ Client for Palm OS device

3. Download RDM+ Client (.prc file) from www.rdmplus.com on your computer.
4. Connect your mobile device to the computer and install RDM+ using Palm Desktop or the other application for transferring files to Palm.

Support

You can find more information about RDM+ on our site: www.rdmplus.com

Support form for further assistance: www.rdmplus.com/rdm/bb/support.html