



## RDM+

Remote Desktop for Mobiles

For Windows Mobile devices

---

## Getting Started Guide

**RDM+ (Remote Desktop for Mobiles)** is a communication tool that gives you the unique ability to connect to your desktop computer through the mobile device and interact with it remotely. With Remote Desktop for Mobiles you can not only observe the remote desktop on the screen of your mobile device but perform different usual keyboard and mouse commands.

RDM+ software consists of two components: the desktop part and the client module.

1. The desktop part (RDM+ Desktop) should be installed on the remote computer.
2. The client module (RDM+ Client) should be installed on your mobile device.

To work with your computer through the mobile device, you should install both these components.

### 1. Installing RDM+ Client on a handheld

---

There are two ways to install RDM+ Client on your handheld.

1. Download **.exe** file to a desktop computer: [www.rdmplus.com/rdm/wm/download.html](http://www.rdmplus.com/rdm/wm/download.html)  
This file contains both the desktop and the client parts. You need Microsoft ActiveSync to be installed on your desktop computer.  
Connect your mobile device to the desktop computer and start the program installation. You should confirm the request of the installation program to install RDM+ with "yes". Installation is finished.  
This way of installation is preferable. If you have problems installing RDM+ this way, please try the second method.

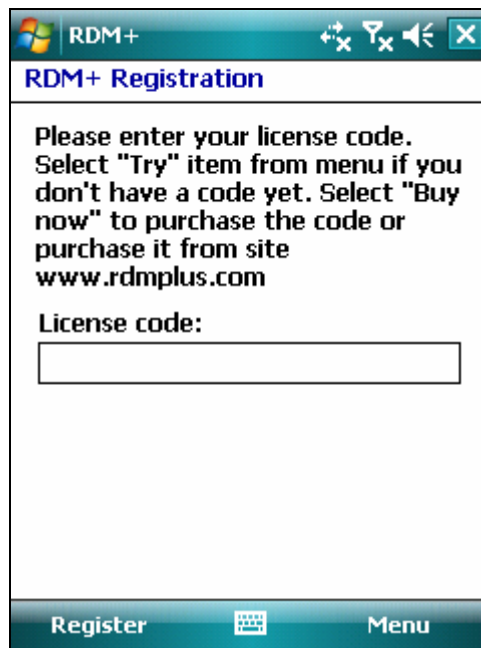
2. Download RDM+ Client **.cab** file directly to your device from **www.rdmplus.com**  
Open the Download page and choose the right client module for your device. Start the program installation running **.cab** file on your device. Installation is finished.

### 2. Registration and trial

---

After the first launch of RDM+ you will be asked to insert the license code, which you have received with the purchase of the program. Please, insert the license code into corresponding field and click the **Register** button.

If you want to use RDM+ in trial mode, select **Trial** item in the menu.



### 3. Address book

---

At RDM+ launch address book window opens. The address book contains the list of computers which you used to connect to.

At first start the address book contains a demo computer only. You can connect to it and make sure that the client can work on your mobile device and will see a simple demonstration of the client abilities.

To add your computer to the address book select **New address** menu item.



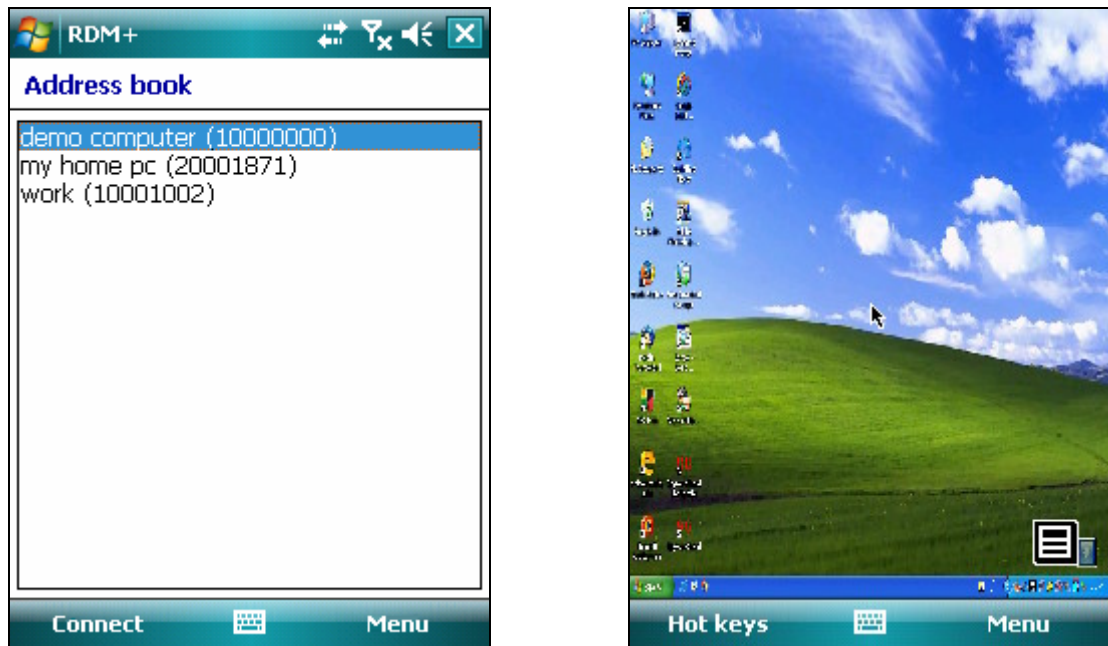
In the New address dialog you should enter the computer number which you received at registration of RDM+ Desktop. You may enter the computer number with or without dashes. Then you need to fill in your account (account name and password) which you created in RDM+ Desktop.

In Description field you may specify a short description text for the computer with this number, which will help you to find a certain computer in large list of records. If the description field remains unfilled only the computer number and account name will be displayed.

Please, save the new address by clicking **Save** button.

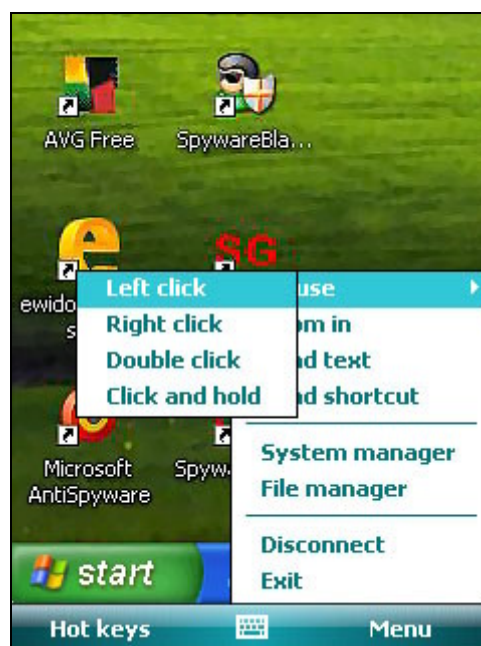
## 4. Remote desktop control

You can freely connect to any saved computer by choosing the menu item **Connect**. In case of successful connection to the selected remote computer you will see the remote desktop.



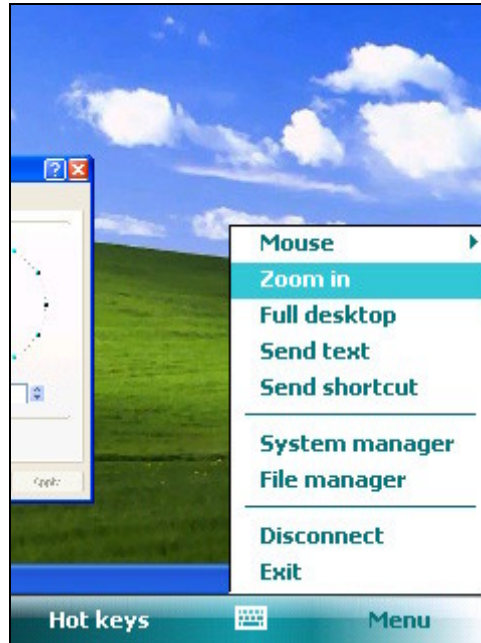
You can control the remote desktop by using both onscreen menu and desktop mode hotkeys. Following options are available in main menu:



- **Mouse** - This menu item is used to perform left, right, and double clicks of a mouse.



**Note:** To move mouse cursor you should use Right, Left, Up and Down navigation keys or joystick on your device.

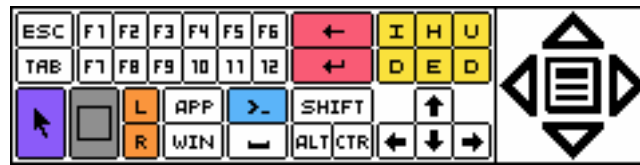
- **Zoom in**– Given menu item serves to enlarge the view of current desktop. **Zoom in** item is available if desktop size is larger then the device's screen. You can zoom in twice and also restore the initial view of the desktop by choosing **Full desktop** item in the menu.



- **Scroll mode** is available on all touchscreen devices. In **Zoom in** mode you can scroll your desktop without mouse cursor clicking the bottom left button on the keyboard  and using stylus.
- **Virtual keyboard** – You can use it to manage the remote screen faster and more convenient with your touchscreen device. To open the keyboard window click the center of the icon in the screen bottom right. 



Use stylus to operate with text, zoom in and out the screen and etc. This functionality also available through the **Hot keys** menu. And it is the only way for smartphones.



Buttons' meanings are as follows:

**Violet** button stands for entering the **scroll mode**

**Gray** button – zoom in and out

**Orange** group – Left and Right mouse buttons

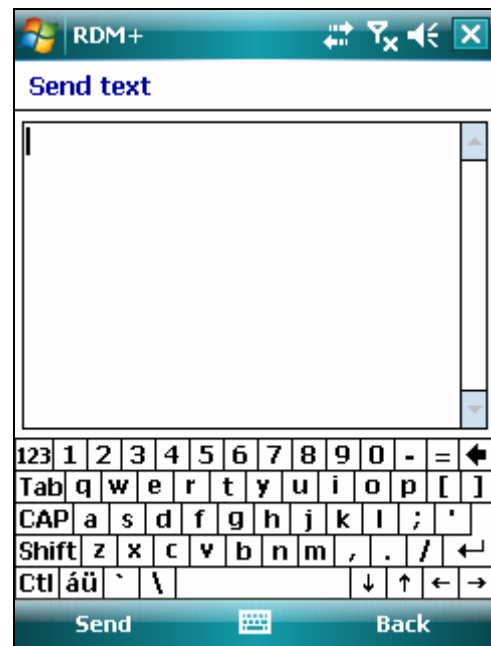
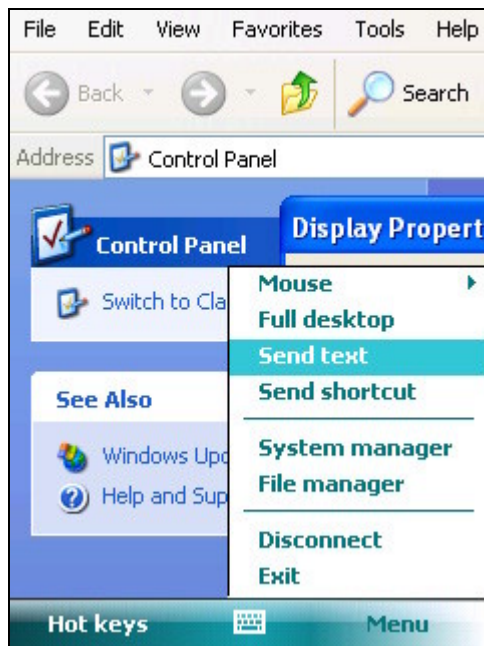
**Blue** button is for quick start of **Console commands**

**Yellow** group – I nsert, Home, Page Up, Delete, End, Page Down respectively

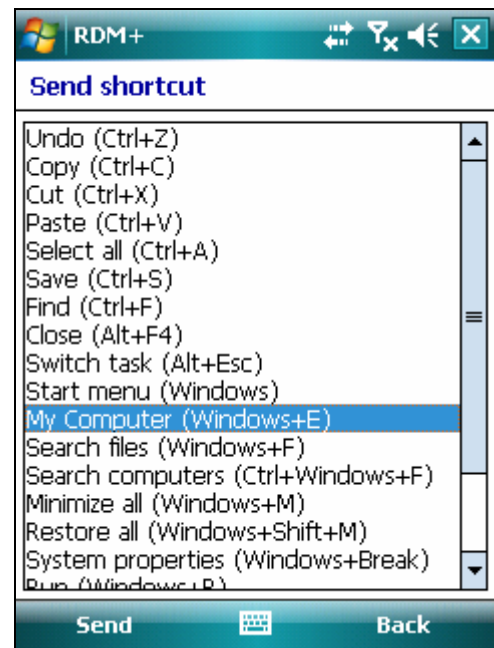
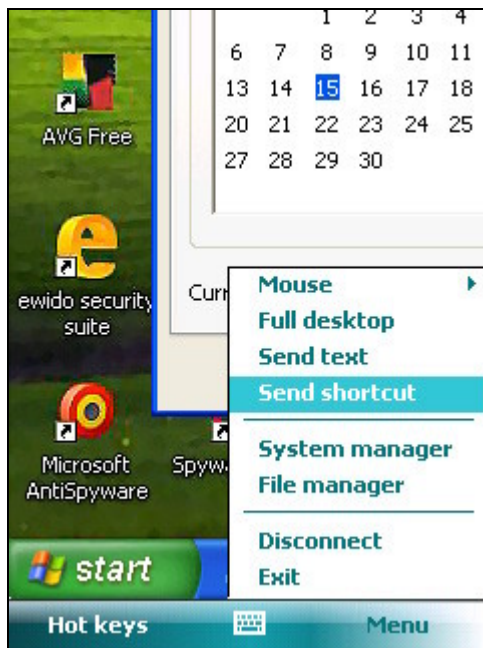
**Pink** group – Backspace and Enter respectively

- **Send text** - You can enter the text that will be transferred to remote host just like you enter it from a keyboard. Along with the plain text, you can also insert control keys and shortcuts (E.g. Alt+ F4).

**Note:** In order to transfer # symbol, you should enter it twice (##) as # key can be involved in other control key combinations as the first symbol (E.g. my password #Enter)



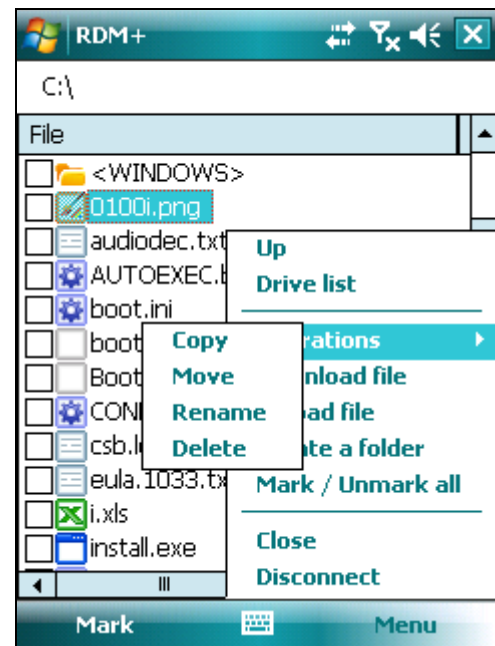
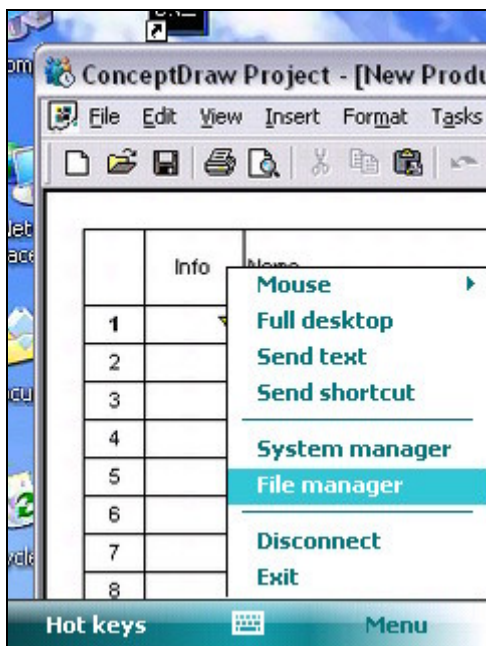
- **Send shortcut** –You can select a shortcut to send it to remote host, like entering it from keyboard.



- **Disconnect** – You will be disconnected from the host, choosing this menu item.

## File manager

When you got connected to remote computer, you may manage files on your computer irrespective of the desktop. You can also exchange your files uploading them from your mobile to the PC and vice-versa (downloading) using **File Manager**.



You can perform the following actions with files and folders on remote computer using File manager menu items named below:

- **Mark/ Unmark all** - Marking/unmarking of all files and subfolders in selected folder for a common group;
- **Copy** - Copying of the selected file or folder (or marked group of files and folders) to specified destination folder;

- **Move** - Cutting and moving of the selected file or folder (or marked group of files and folders) to specified destination folder;
- **Download file** – Downloading files from the remote computer to your mobile;
- **Upload file** – Uploading files to the remote computer from your mobile;
- **Delete** - Deleting of the selected file or folder (or marked group of files and folders);
- **Rename** - Renaming of the current file or folder;
- **Make new folder** - Making a new folder;
- **Close** – Allows you to get back to the remote desktop quickly.

For operation with a single file or a folder, select it with a checkbox and choose an appropriate item from the menu. For operations with a group of files or folders first mark the required files and/or folders and select a corresponding menu item.

- **How to copy/move file/folder**

1. Choose a file to copy/move on a remote computer's file system.
2. Press **Operations - Copy /Move** menu item.
3. Select a destination folder on the remote computer to copy/move file.
4. Press **Copy/Move** button.

- **How to download a file**

1. Choose a file to download on a remote computer's file system.
2. Press **Download file** menu item.
3. Select a destination folder on your handheld to download the file.

- **How to upload file**

1. Select a destination folder on a remote computer.
2. Press **Upload file** menu item.
3. Select a file on your handheld to upload to the selected folder on your remote computer.

## Hotkeys Usage

Following hotkeys are available in program:

**[Arrow Left/Right/Up/Down]** – move mouse cursor

**[Enter]** – Left click and Left double click if push twice

**[0]** – Send text dialog

**[1]** – Left click

**[2]** – Left double click

**[3]** – Right click

**[4]** – Send shortcut dialog

**[6]** - Click & Hold

**[8]** – Zoom in

**[9]** – Full desktop

**SelectKey** is usually the central navigation key or Joystick on your device. The work of this key is different depending on control mode which is currently in use. That is in **Direct input mode**

this key performs Enter command while in mouse cursor mode pressing of this key means a mouse click.

## 5. Setup menu

---

You can change settings of application in **Setup** menu.

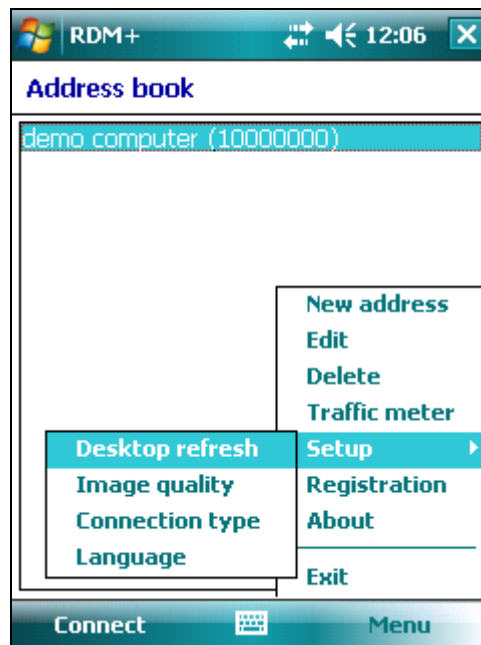
- **Desktop refresh**

You can change the remote desktop refresh rate. Refresh rate is specified in milliseconds, the possible value is from 200 to 30000. Increasing this value you can reduce data traffic, but the time interval between changes of remote desktop will be increasing. By default desktop refresh is 1000 ms.

- **Connection type**

The application supports both **HTTP** and **TCP/IP** connection types. If is problematic to connect via TCP/IP connection type, please select HTTP connection type in this section.

**Note:** After changing any parameter in Setup menu, don't forget to save your new settings by choosing a **Save** item in menu. Otherwise your changes won't be saved.



**Note:** You can change the desktop orientation for more convenient work with your mobile device. If your handheld has an accelerometer it will rotate the app automatically. And if it's not, go to the device settings and change the orientation in that form.

## 6. Support

---

You can find more information about RDM+ on our site: [www.rdmplus.com](http://www.rdmplus.com)

Looking for update or trial installation? See the Download page:

[www.rdmplus.com/rdm/wm/download.html](http://www.rdmplus.com/rdm/wm/download.html)

Support form for further assistance: [www.rdmplus.com/rdm/wm/support.html](http://www.rdmplus.com/rdm/wm/support.html)

## **Appendix A – Downloading RDM+ Client**

---

### **RDM+ Web client**

Point any browser to [web.rdmplus.com](http://web.rdmplus.com) Sign up for RDM+ Web service and connect to your computer remotely.

RDM+ Web service is also available from Apple iPhone and iPod Touch at [iphone.rdmplus.com](http://iphone.rdmplus.com) Sing in with your RDM+ Web account.

### **RDM+ Client for Apple iPhone and iPod Touch**

1. Go to App Store on your iPhone or iPod Touch and download RDM+.
2. Or find RDM+ on iTunes Store and download it to your computer. Then connect your iPhone to the computer and iTunes will sync applications automatically.

### **RDM+ Client for iPad**

1. Go to App Store on your iPad and download RDM+.
2. Or find RDM+ on iTunes Store and download it to your computer. Then connect your iPad to the computer and iTunes will sync applications automatically.

### **RDM+ Client for BlackBerry handheld**

- a. Point your BlackBerry browser to [bb.rdmplus.com](http://bb.rdmplus.com). Scroll down to highlight **Download** and select **Get Link** from the menu. Download the client and reboot your device.
- b. If for some reason you can't download the client module directly, download RDM+ Client (.zip file) from [www.rdmplus.com](http://www.rdmplus.com) to your computer. Unzip the file.

Connect your BlackBerry to the computer. Run BlackBerry Desktop Manager on your computer, choose Application Loader, browse into a folder with rdmpplus.alx file, select it and start the file uploading. The icon of RDM+ application appears on your device.

### **RDM+ Client for Java-enabled phone and Symbian OS device**

1. You can download the client directly to your mobile device. The WAP download location is: [wap.rdmplus.com](http://wap.rdmplus.com)
2. If for some reason you can't download the client module directly, or error occurs at download, you can download RDM+ Client (.zip file) from our site [www.rdmplus.com](http://www.rdmplus.com)

### **RDM+ Client for Windows Mobile device**

1. Download the client from [wm.rdmplus.com](http://wm.rdmplus.com) directly to your handheld and install it.
2. If for some reason you can't download the client module directly, download RDM+ Client (.exe file) from [www.rdmplus.com](http://www.rdmplus.com) to your computer. Connect your mobile device to the computer and start the program installation. (You need Microsoft ActiveSync to be installed on your computer.)

### **RDM+ Client for Palm OS device**

1. Download RDM+ Client (.prc file) from [www.rdmplus.com](http://www.rdmplus.com) on your computer.
2. Connect your mobile device to the computer and install RDM+ using Palm Desktop or the other application for transferring files to Palm.